

Carrier Card

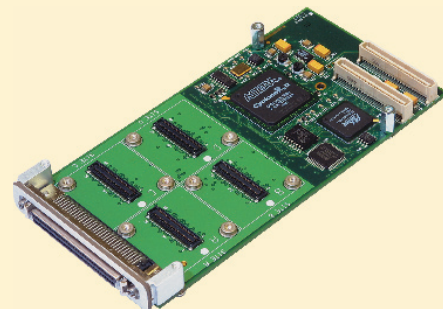
Micro Mezzanine System Electrical Conversion Modules

The 5068 is the high-end PMC form factor carrier for Technobox Micro Mezzanine System Electrical Conversion Modules (ECMs). As many as four ECMs can be accommodated by the carrier. There is a two population configurations (35K and 70K) based on Altera(R) Cyclone II EP2C3 FPGAs.

The FPGA is effectively the engine for the carrier, executing a resident IP core design and orchestrating various processing and I/O functions for the installed ECMs. The ECMs themselves have unique characteristics and capabilities that are supported by the FPGA and for which separate drivers and code are installed as needed. Each ECM site can be populated by a different module to allow considerable design flexibility. The 5495 supports PCI target, master, and DMA modes and provides only front I/O connectivity. A PLX 9056 serves as the PCI bridge (Universal 3.3 or 5V signaling, 32-bit, 33 MHz).

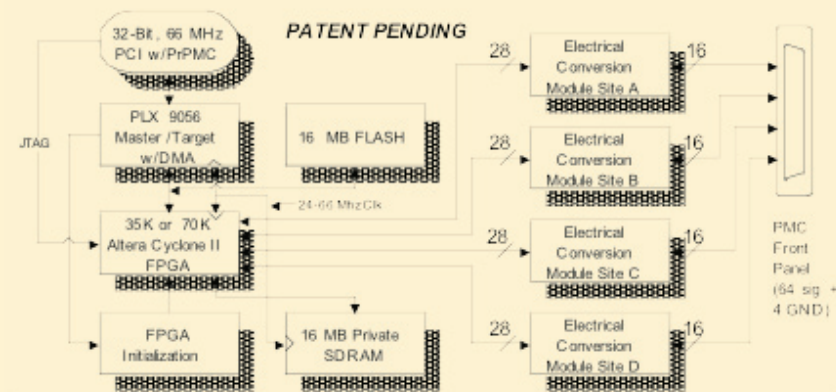
On power up, the EP3C16 configuration cells are automatically loaded from a serial FLASH chip located on the PMC. Technobox provides a sample design, including Altera Quartus files and "C" source code. The user may override this default configuration by dynamically reprogramming the FPGA from the host processor or by in-circuit burning of the re-programmable 16Mbit serial flash chip.

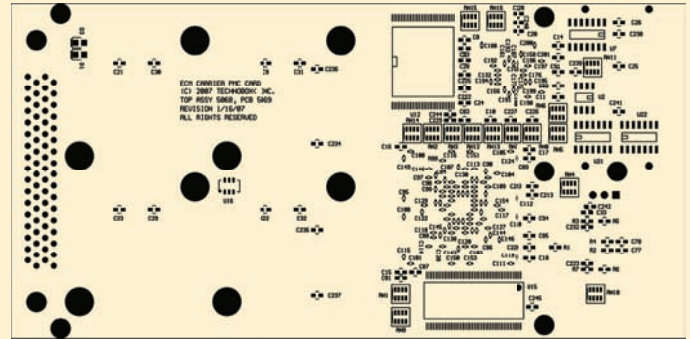
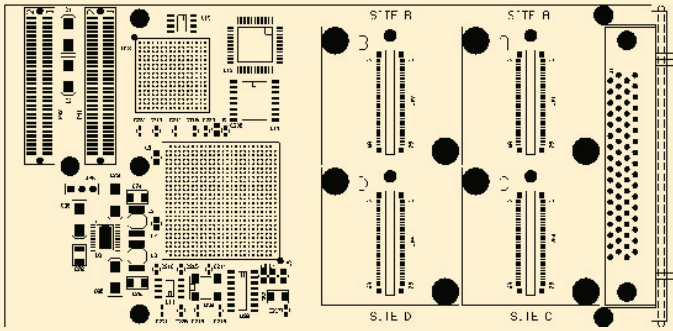
The 68-pin front panel connector is compatible with standard fast/wide differential SCSI cables. Optional Technobox transition panels (e.g., P/N 4988) may be used to break out the differential signals into more convenient individual connectors, such as DB9 interface connectors.



5068

- High-end ECM carrier PMC (master/slave PCI, μ CLinux, DRAM, Flash, PrPMC)
- 32 bit 66 MHz PCI interface
- 3.3V or 5V PCI interface
- PLX PCI9056 PCI to local bus interface
- Supports PCI Target, Master, or DMA
- Processor PMC (PrPMC) mode (Monarch)
- Altera Cyclone II FPGA
4Kb Memories, 18x18 Multipliers, PLL Support
- EP2C35F67218N with 35K Logic Elements
- Supports Nios Processor
- Easily configurable using Quartus and SoPC Builder
- Four ECM sites
- Configure FPGA by serial FLASH, PCI or JTAG
- Two status LEDs
- Industrial temperature
- RoHS compliant





Specifications

| | |
|-------------------------------|--|
| Temperature (Operating): | -40 to +85 degrees C |
| Temperature (Storage): | -55 to +105 degrees C |
| Altitude: | Not Specified or Characterized Typical similar equipment is at 15,000 ft. |
| Humidity (Operating/Storage): | 5% to 90% non-condensing |
| Vibration: | Not specified or Characterized |
| Shock: | Not specified or Characterized |
| MTBF: | Available on request |
| Weight: | 78 grams |
| Power: | TBD |
| PCI Signaling: | 5V/3.3V, 32 bits |
| PCI Clock: | 66 MHz PCI |
| Voltages Required PMC: | +5V, +3.3V +/- 5% |
| Voltages Required ECM: | +12V, -12V, +5V, +3.3V +/-5% |
| Size: | 74 mm x 149 mm |

Ordering Information

5068: Electrical Conversion Module (ECM) Carrier, PMC Form Factor with 35K LE (Altera EP2C35F67218N)
4Kb Memories - 105
18x18 Multipliers - 35

5153: Electrical Conversion Module (ECM) Carrier, PMC Form Factor with 70K LE (Altera EP2C70F67218N)
4Kb Memories - 250
18x18 Multipliers - 150



140 Mount Holly Bypass
Unit 1
Lumberton, NJ 08048

Tel: 609-267-8988
Fax: 609-261-1011

www.technobox.com